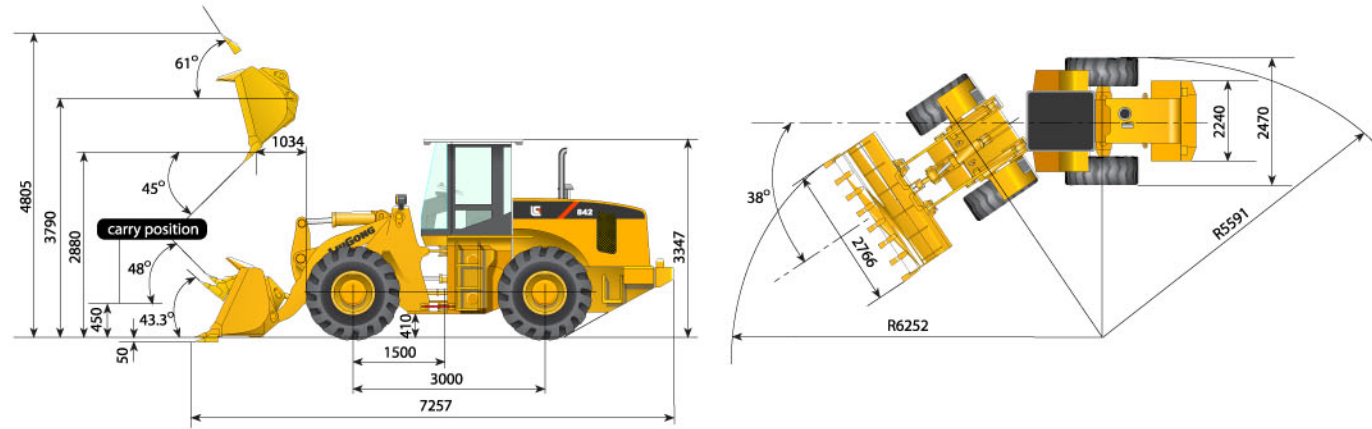


## Dimensions



# CLG842

## WHEEL LOADER

ISO9001  
ISO14001

Bucket Capacity	1.8~3.0m³
Rated Load	4000kg
Rated Power 123kW(165hp)@2200rpm	
Operating Weight	13700kg

GUANGXI LIUGONG MACHINERY CO.,LTD.      T: +86 772 3886124      F: +86 772 3886122      E-mail:overseas@liugong.com      www.liugong.com

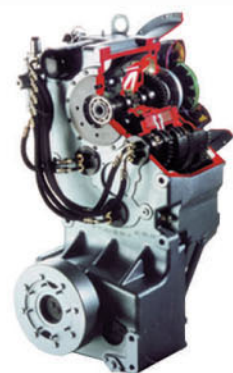
# Advanced Technology, Leading Quality

- Totally innovative technologies. China's leading third generation Wheel Loader
- Equipped with a ROPS/FOPS cab
- Has a world class environmentally friendly engine
- Strong flexible frame and working elements
- Easy and cost effective service and maintenance
- Automatic bucket leveling system
- 20MPa high pressure hydraulic and pilot control systems
- Electronic monitoring and alarm system
- Wide range of attachments



## World class quality and efficiency

- Classic CUMMINS engine
- Torque reserve rate meets the requirement for instant overloading
- Engine power remains consistent over time



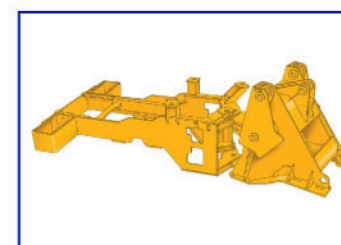
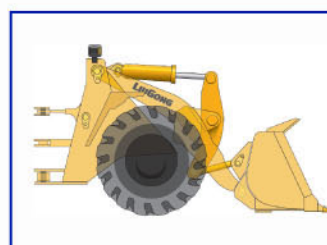
## World class transmission

- ZF 4WG180 transmission
- 4 forward gears and 3 reverse gears, particularly suited to frequent forward to reverse shifting
- Automatic or semi-automatic gear shift makes operation easier and smoother
- Electronic hydraulic gear-shift is easy to operate



## Solid structure endures tough conditions

- Strong bucket structure
- The bucket is made from enhanced steel plate to prevent distortion under stress
- Steel ribs strengthen the structure, preventing vibration, bending and transmigration
- A variety of buckets are available to satisfy the requirements of different working condition
- General purpose bucket (Standard Equipment)



## Separate articulated load point

### Excellent Z-bar linkage

- High breakout force ensures quick lifting and large load capacity
- Large rollback angle provides for better loading capacity
- Unloading speed can be controlled reducing stress on the linkage and making the operation safer
- With fewer articulated joints and working elements service and maintenance cost is reduced
- Sealed linkages improve pin lubrication reducing wear

### Exceptionally strong and durable frame and boom

- Designed for the toughest working conditions
- Single plate structure rear frame absorbs vibration and torsion
- Lengthened articulated points



## Efficiency and Durability

1. Equipped with electronic monitoring system
  - Fuel gauge
  - Coolant temperature gauge
  - Converter oil temperature gauge
  - Voltage gauge
  - Low pressure alarms for brakes, engine oil and transmission oil
  - Electric motor fault alarms and central lubricating system
2. Full hydraulic power with flow amplified system ensures responsive control
3. Electronic hydraulic gear-shift is easy to operate
4. Pilot control has quick response and is comfortable to operate
5. Electronic bucket lever



## Versatility and Flexibility

The LiuGong CLG842 is a versatile and flexible wheel loader. It is excellent for loading trucks, feeding crushers, earthmoving and timber handling.

- Bucket sizes range from 1.8 m<sup>3</sup> to 3.0 m<sup>3</sup>, smaller buckets are all designed for loading heavy materials, while larger buckets are designed for loading light materials. Please refer to the bucket selection chart for more details.
- Side dump bucket for tight working conditions ensures productivity.
- 4-in-1 bucket is designed for multiple duties including loading, dozing, clamping and grading.
- Log clamp series for handling timber and pipe.
- Pallet forks enable the machine to be used for stacking.
- Quick coupler makes it easy and fast to change working attachments.
- CLG842 can be equipped with third hydraulic functions when needed.



Log clamp



Rock bucket



4-in-1 bucket



Side dump bucket



Quick coupler



# Safety and Comfort

## Safety and comfort

- 360° visibility and treated glass to protect the driver from ultraviolet radiation
- Sealed and insulated against dust, noise and outside temperatures for comfortable operation
- Fluorine-free air conditioner
- Optional stereo system
- Adjustable steering column



# Serviceability

- Spare parts for all components are readily available
- Reverse opening engine hood for easy access to the engine compartment



# Specifications

## Overall Data

Operating weight	13700kg
Bucket capacity	2.3m³
Rated load	4000kg
Maximum traction	119kN
Grade ability	30°
Breakout force	125kN
Static tipping Load (full 38° turn)	86kN

## Engine

CUMMINS B5.9-C	
Rated power	123kW(165hp)@2200rpm
Peak torque	694Nm@1500rpm
Displacement	5.9L
Cylinders-Bore x Stroke	6-102 x 120mm

## Transmission

ZF 4WG180	
Type: counter shaft-type power shift, semi-automatic electrical hydraulic shifting control	
Converter: single-stage, single-phase, three element torque converter	
Travel Speeds(km/h)	

	Gear 1	Gear 2	Gear 3	Gear 4
Forward	0~6.7	0~11.7	0~23	0~37
Reverse	0~6.7	0~11.7	0~23	

## Steering

Articulated frame, full hydraulic power with flow amplified system, full-flow filtering

## Brakes

Service brakes:	All wheels use clipper disc brakes
Parking brakes:	Shoe-type brake, operator applies electronic-control
Emergency brakes:	Using parking brake, the brake will automatically /manually apply. Equipped with braking low-pressure warning system

## Hydraulic System

Relief valve setting			18MPa
Hydraulic cycle time, rated load in bucket (in seconds)			
Raise	Dump	Lower(empty, float down)	Total
5.6	1.9	3.0	10.5

## Axles

Conventional differentials with clipper disc brakes

## Capacities

Fuel tank	210L
Hydraulic tank	230L
Crankcase	17L
Transmission	45L
Differential & final drivers-front	30L
Differential & final drivers-rear	22L

## Tires

20.5-25

## Equipment

● Standard	▲ Optional
● CUMMINS B5.9-C engine	● Pilot control
● ZF 4WG180 transmission	● LiuGong axles
● Automatic bucket leveler	● Lift kick-out system
● ROPS/FOPS cab	● Air conditioner
● Back-up alarm	● 2.3 m³ General purpose bucket
▲ 1.8 m³ Side dump bucket	▲ 1.8 m³ Rock bucket
▲ 2.5 m³, 3.0m³ Light material bucket	▲ 2.3 m³ 4-in-1 bucket
▲ Log forks	▲ Pallet forks
▲ Quick coupler and quick change attachments	▲ Slip-limited differential system
▲ Wet multi-disc brakes for axles	
▲ Automatic single lever with pilot control	
▲ Centralized automatic lubricating system	

# Attachments Dimensions

Buckets		General Purpose		Light Material		Rock		Side Dump		4-in-1		Log Clamp	
Capacity	m³	2.3	2.5	3.0	1.8	18				2.3		Clamp diameter	mm
Width	mm	2766	2720	2870	2596	2700				2690			mm
Dump height	mm	2900	2835	2791	2800	3734	2715	2850				Dump height	mm
Dump reach	mm	1034	1102	1118	944	134	1113	1042				Dump reach	mm
Overall length	mm	7257	7116	7177	7442	7458	7458	7092				Overall length	mm
Overall height	mm	5080	5083	5187	4930	6306	5461	5090				Overall height	mm
Turning radius outside bucket	mm	6252	6186	6272	6217	6320	6301	6168				Turning radius outside bucket	mm
Turning radius outside tires	mm	5591	5591	5591	5591	5591		5591				Turning radius outside tires	mm

## CLG842 Bucket Selection Chart

